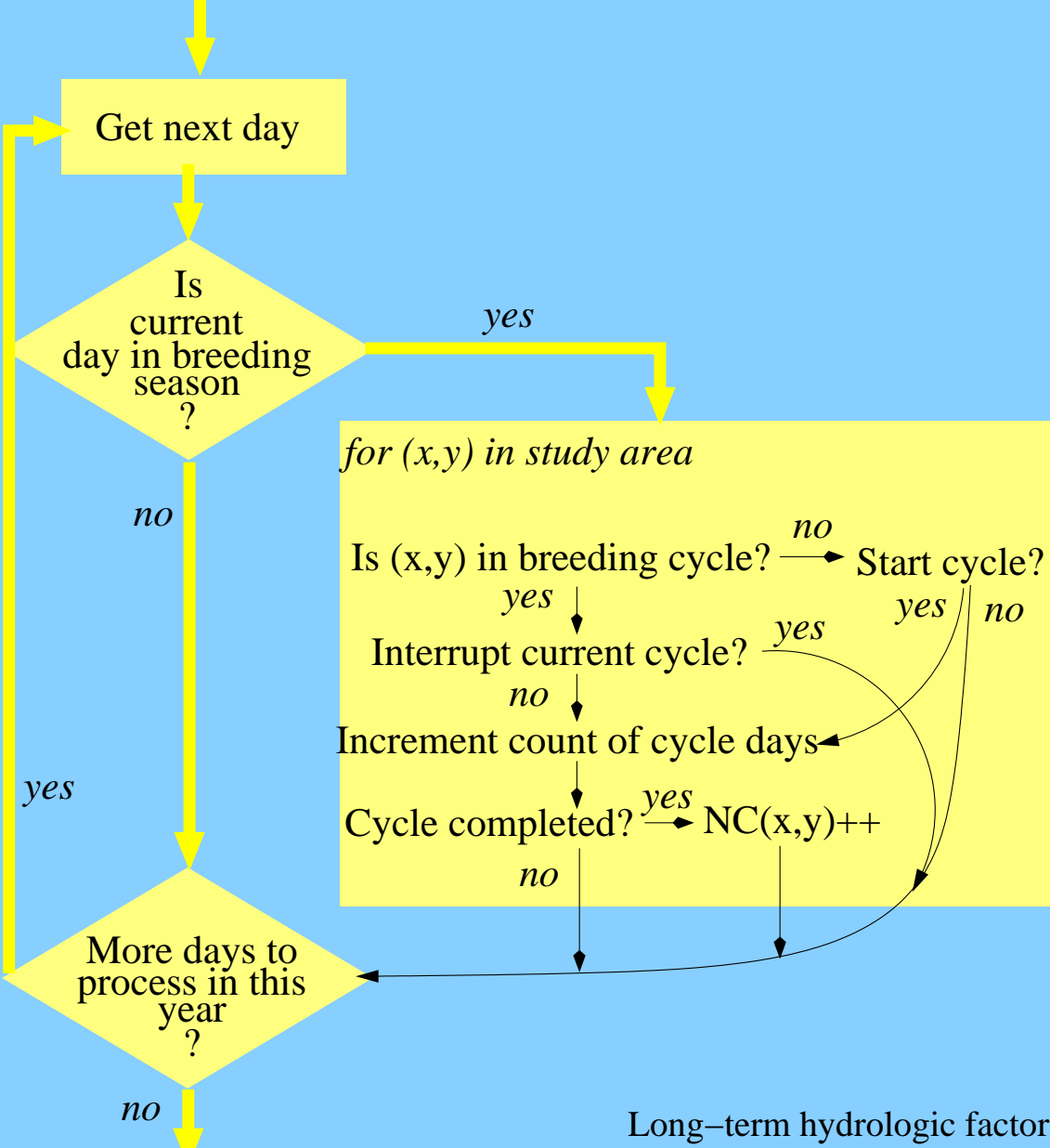


# Snail Kite SESI Core

StudyArea(x,y) =  $\begin{cases} 1 & \text{if suitable.} \\ 0 & \text{otherwise.} \end{cases}$

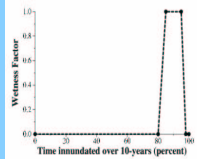
Suitable FGAP habitat types:  
 Freshwater marsh    Typha    Spartina  
 Muhlenbergia    Eleocharis    Open water



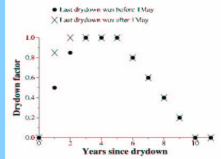
for (x,y) in study area

$$\text{IndexMap}(x,y) = \frac{\text{NC}(x,y)}{\text{MaxNC}} * \text{MIN}(\text{wetfactor}(x,y), \text{dryfactor}(x,y))$$

Long-term hydrologic factors:



wetfactor



dryfactor